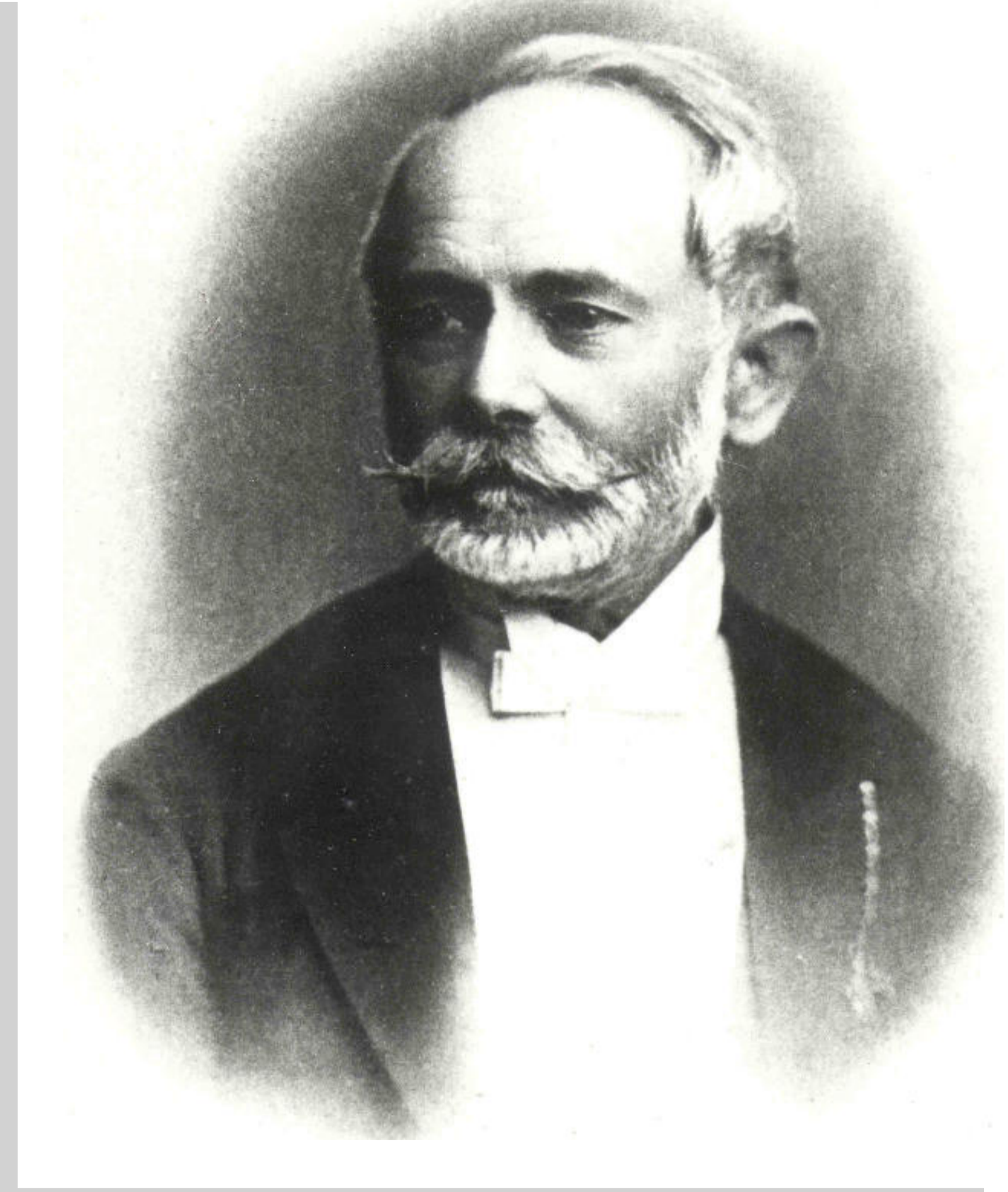


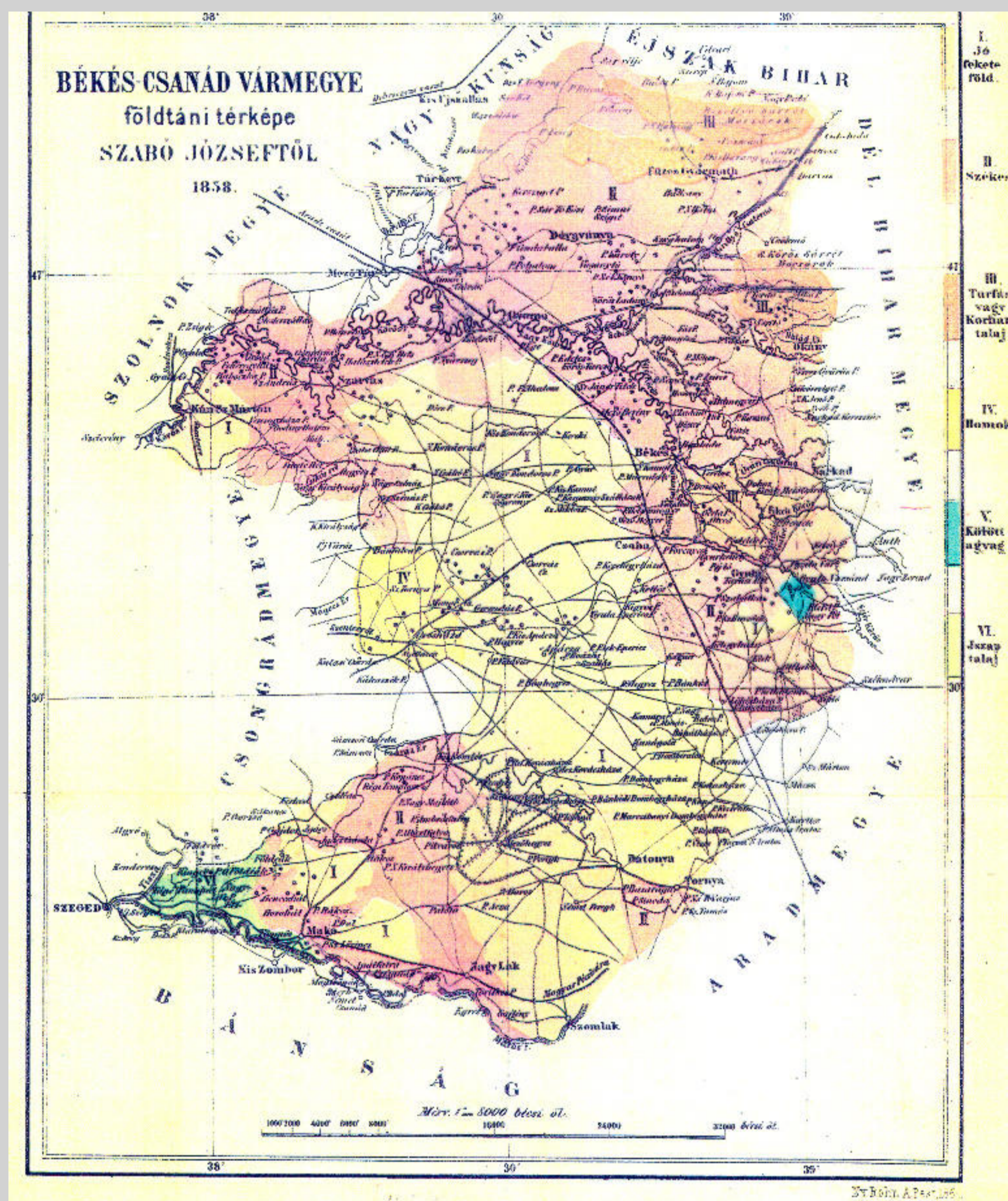
Szabó József

(1822–1894)

mining engineer, geologist, mineralogist, professor, member of the Academy of Science, world famous expert in rock-research
The first agrogeological map of scientific value was compiled by József Szabó.

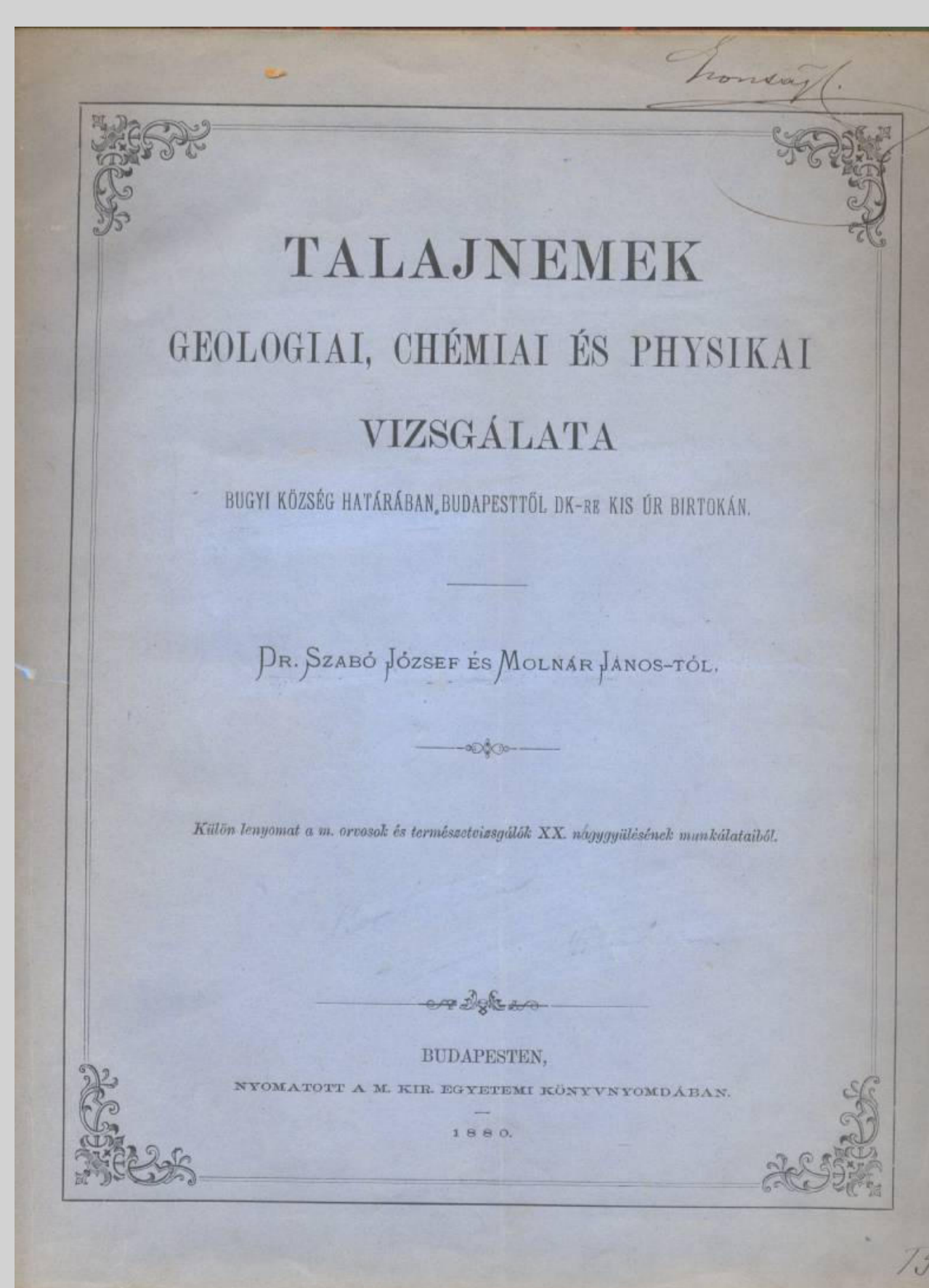


Geological map of Békés and Csanád counties

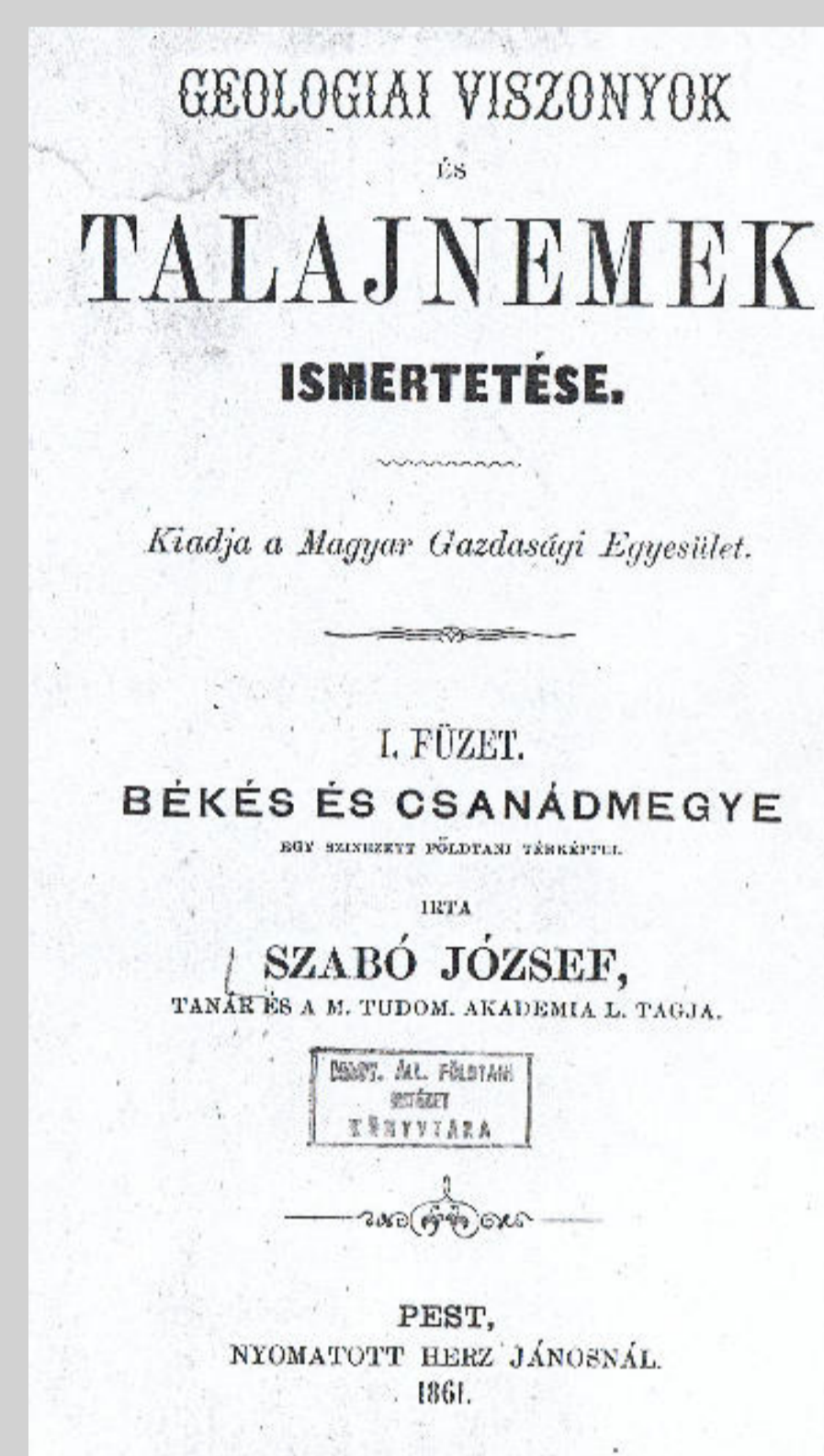


The basis of the work is provided by the geological survey focused not merely on the soil but considering the subsoil and the geological profile as well completed by hydrogeological observations and examinations.

Geological, chemical and physical analysis of the soils in Bugyi



Geological characteristic and soil types of Békés and Csanád counties

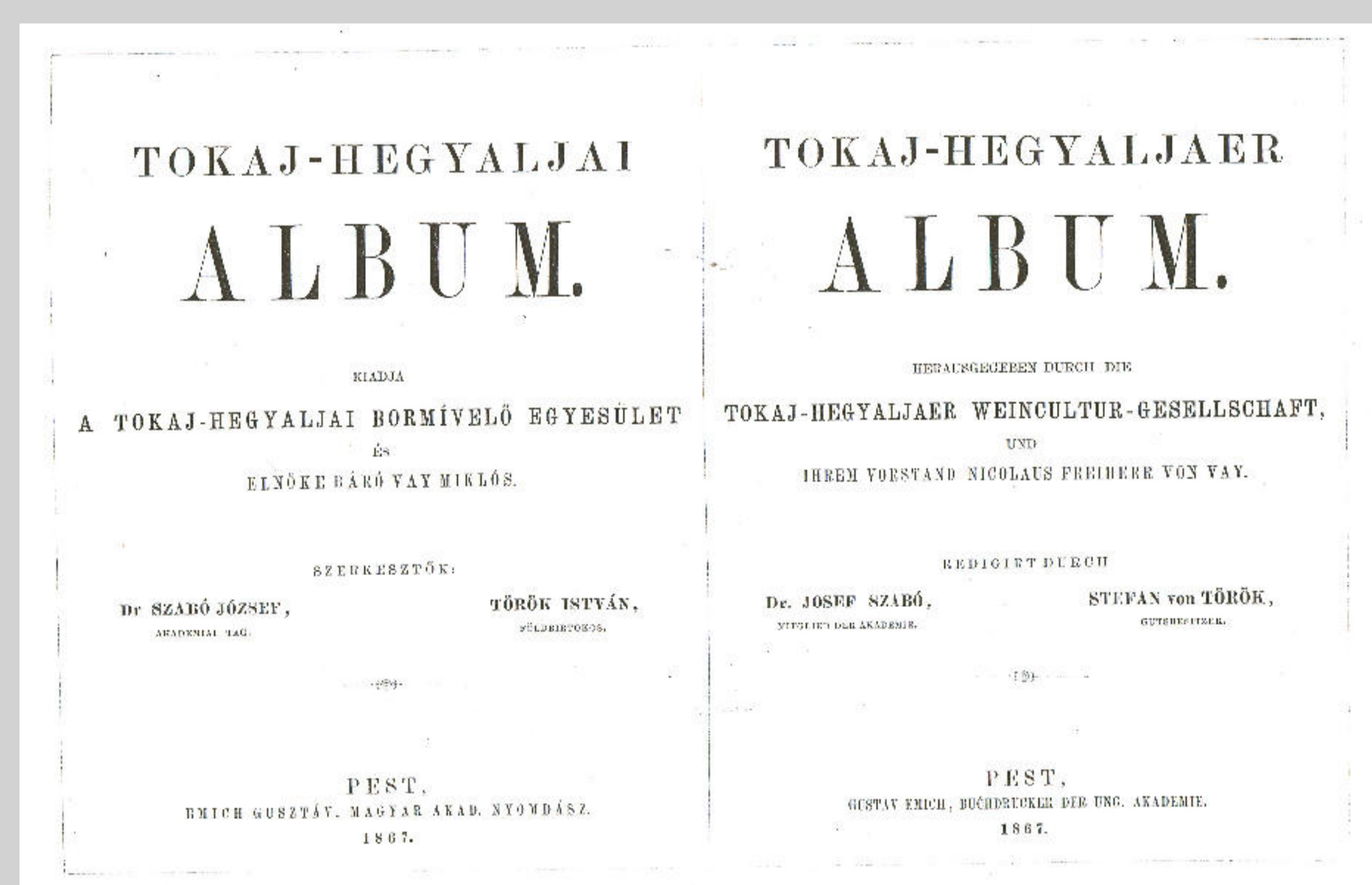


His work focused on the study of the geological setting and soil types of Békés and Csanád counties and laid the foundation of agrogeological, pedological and lowland geological mapping in Hungary.

This study was not restricted namely to field observations, it included detailed field and laboratory analyses and sampling as well. The laboratory tests performed by János Molnár, the associate of J. Szabó provide valuable results still today. One of the important aspects of their investigation is that beside studying different soils and sediments they extended their survey on examining subsurface aquifers as well. In existing wells they investigated the depth and chemical composition of groundwater and its action on soil development.

Contracted by the Hungarian Economic Association and published in 1861 this work is mentioned generally as a sole map. This map is though merely the annex of a book exceeding 100 pages (methodological work, pedological textbook, geological description and the characterisation of an area upon its field- and laboratory investigation together with its applied geological and agrogeological evaluation). The publishing was due to the recognition that "natural scientific reporting on soil and land types in general is one of the basic needs of an appropriately educated farmer acting by reason" (Szabó J. 1861).

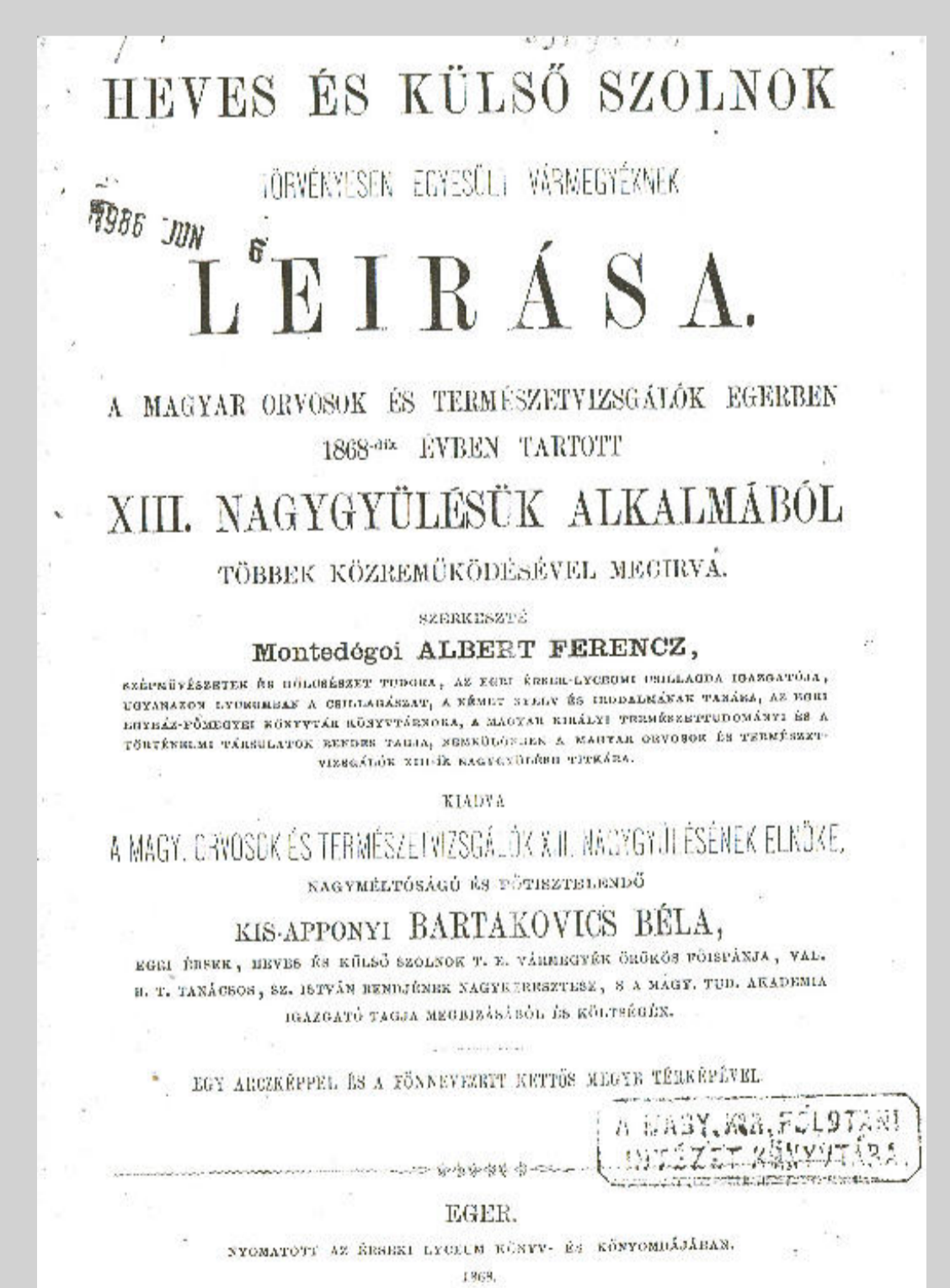
Tokaj-Hegyalja Album



This first successful work was followed by two mapping studies. Chapter IX. of the Tokaj-Hegyalja Album contracted by the Tokaj-Hegyalja Viticulture Association and prepared in 1867 includes a map annex with detailed characterisation of the soils occurring in the region.

The third important work of J. Szabó related to agrogeological mapping is the description of the joined Heves and Külső Szolnok counties. Part II. presents the geological setting of the county. Like in previous works, beside the geological features he presents different soils as well and provides an annex demonstrating the superficial and near-surface young sediments and the soil types as well.

Description of Heves and Külső Szolnok counties



Bridging the Centuries
1909–2009

Hungary – B u d a p e s t
16–17 September, 2009

