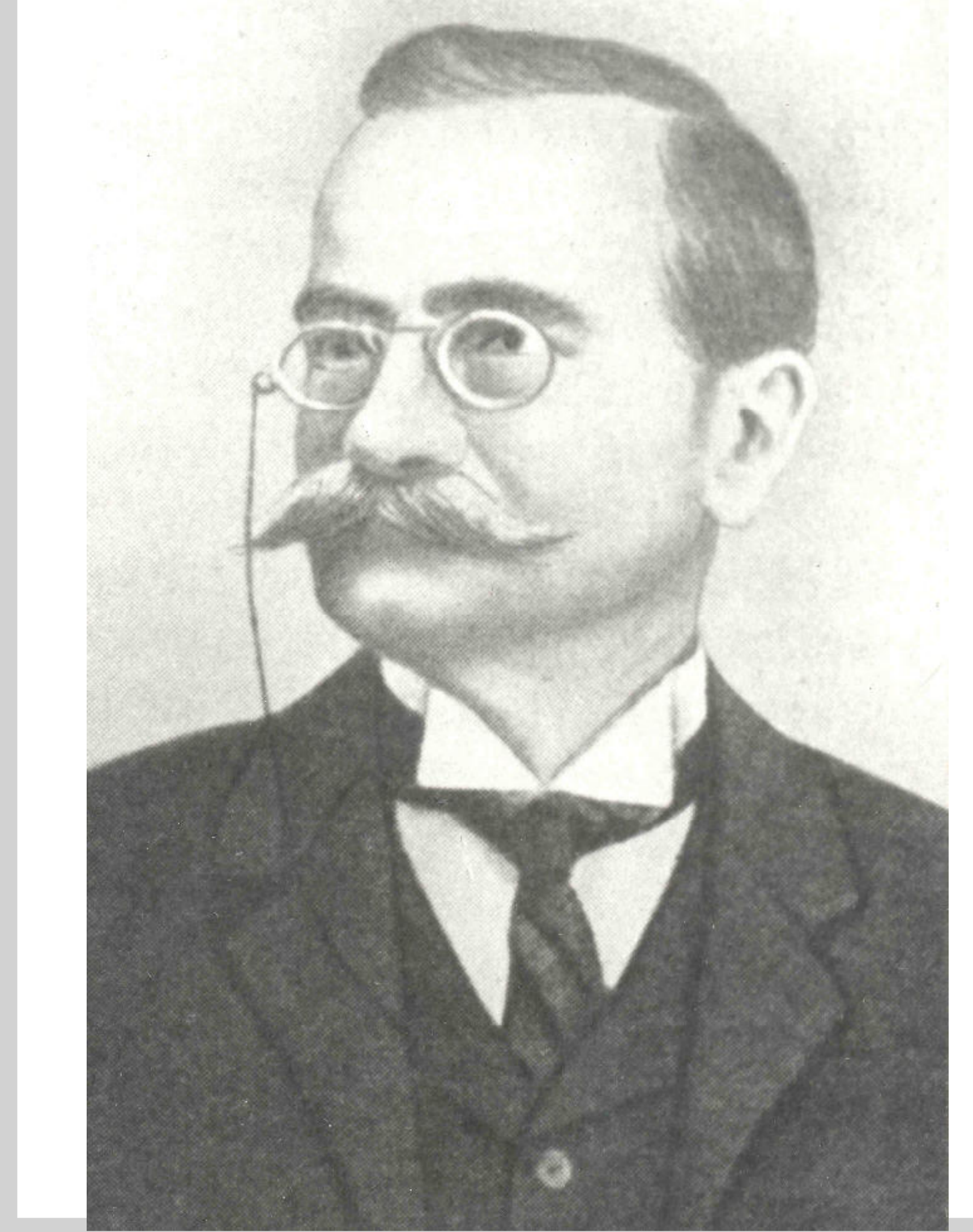


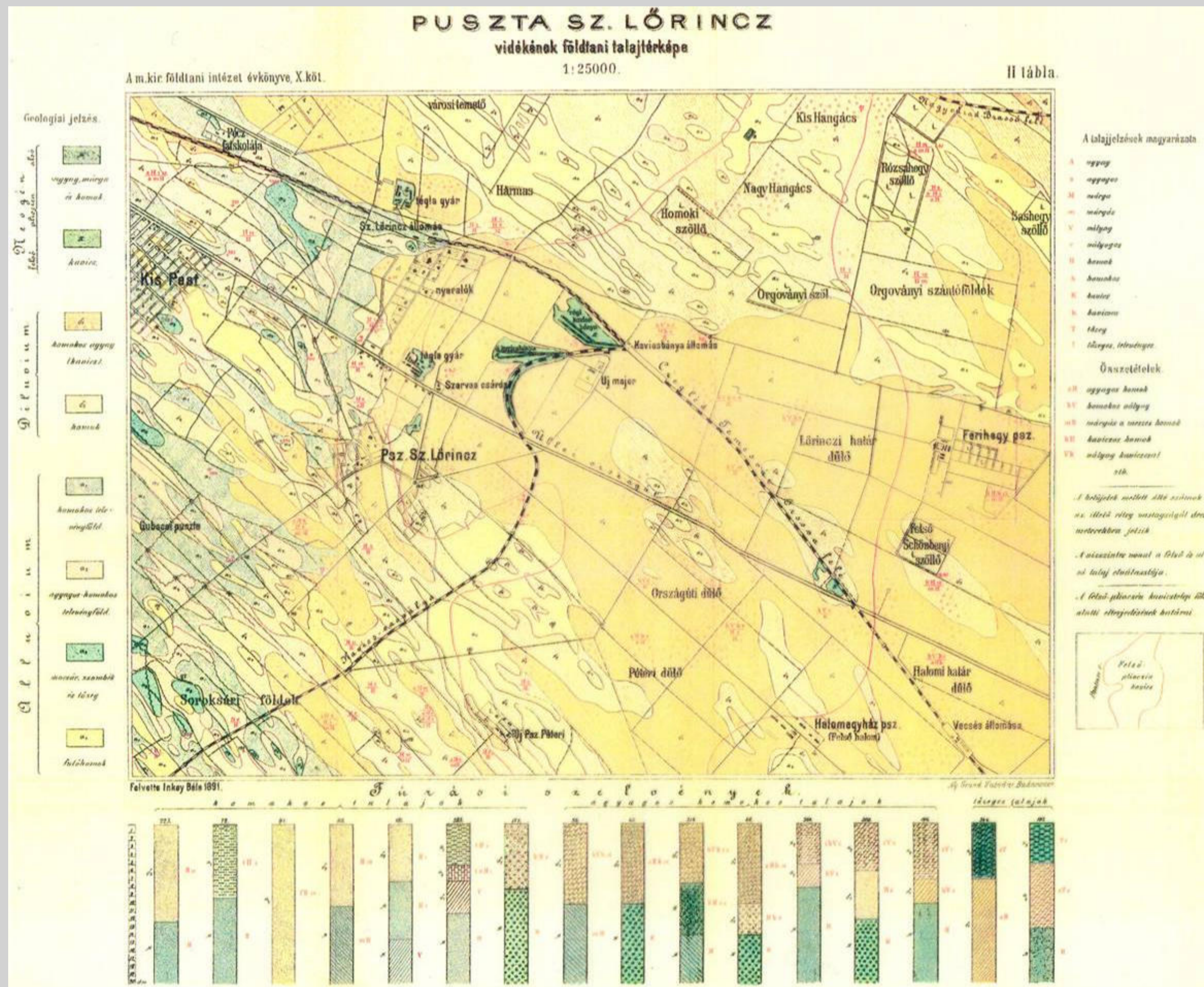
Inkey Béla

(1847–1921)



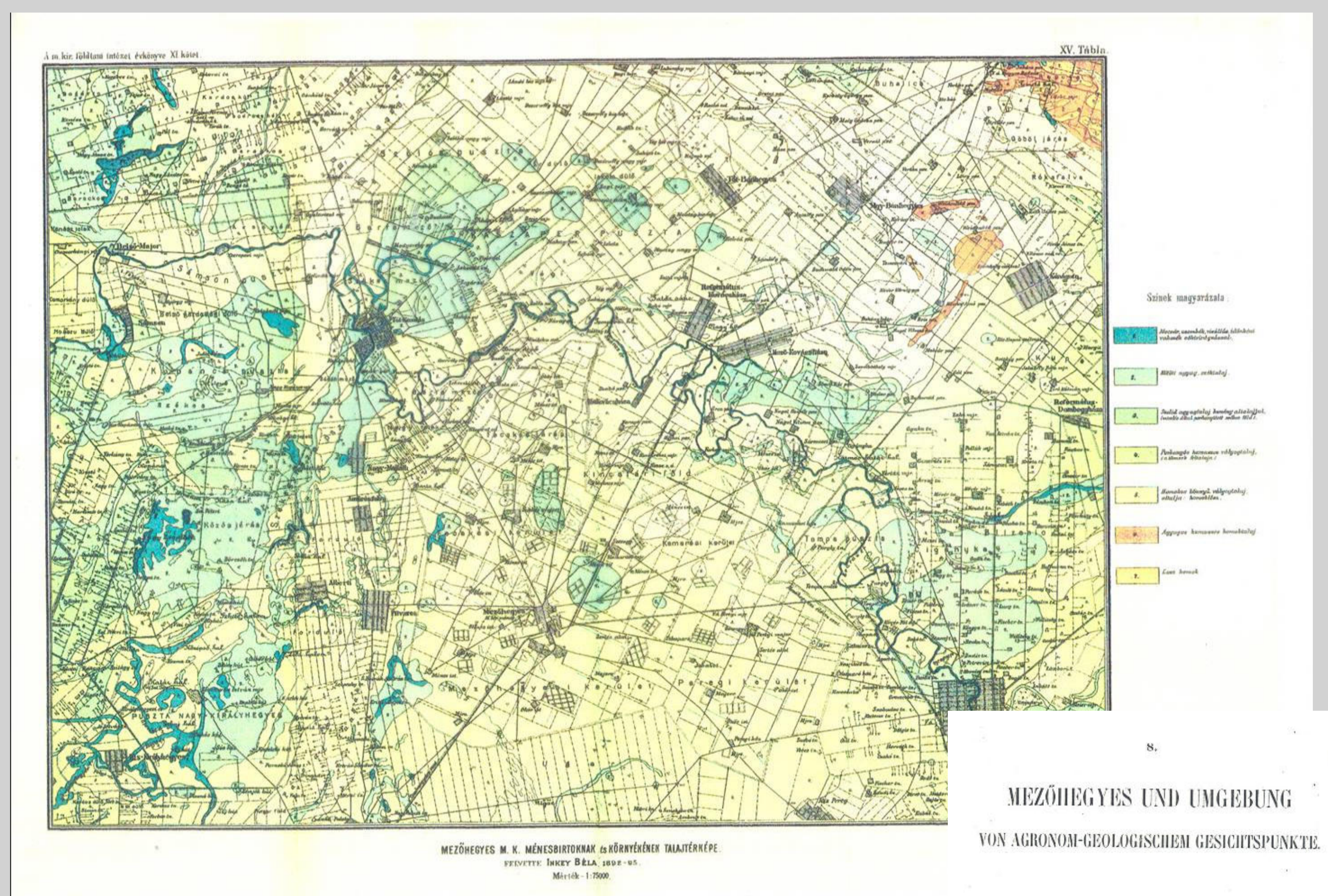
Béla Inkey was the first head of the Agrogeological Department (established in 1891) of the Geological Institute of Hungary. He launched the agrogeological mapping of Hungary making use of Prussian and Saxon experience, after he returned from his study tour from abroad and summarised his experiences in a report. He emphasised the importance of the geological basis to the knowledge of soil properties. He determined the methodology and guidelines of agrogeological mapping.

Pedological map of the surroundings of Pusztaszentlőrinc



Based on his observations during his study tour and his own farming experience he thought that agrogeological mapping of the country must have been started by the survey of large estates. The map of the entire country should have thus been established upon the new experience gained in this process.

After his fruitful study tour it is still 1891 when he performs the mapping of the first agrogeological sheet together with his recently appointed associate, Péter Treitz in the surroundings of Pusztaszentlőrinc in Pest county. The related report with map annex was already published next year entitled "Pedological mapping of the surroundings of Pusztaszentlőrinc (Pest county)".

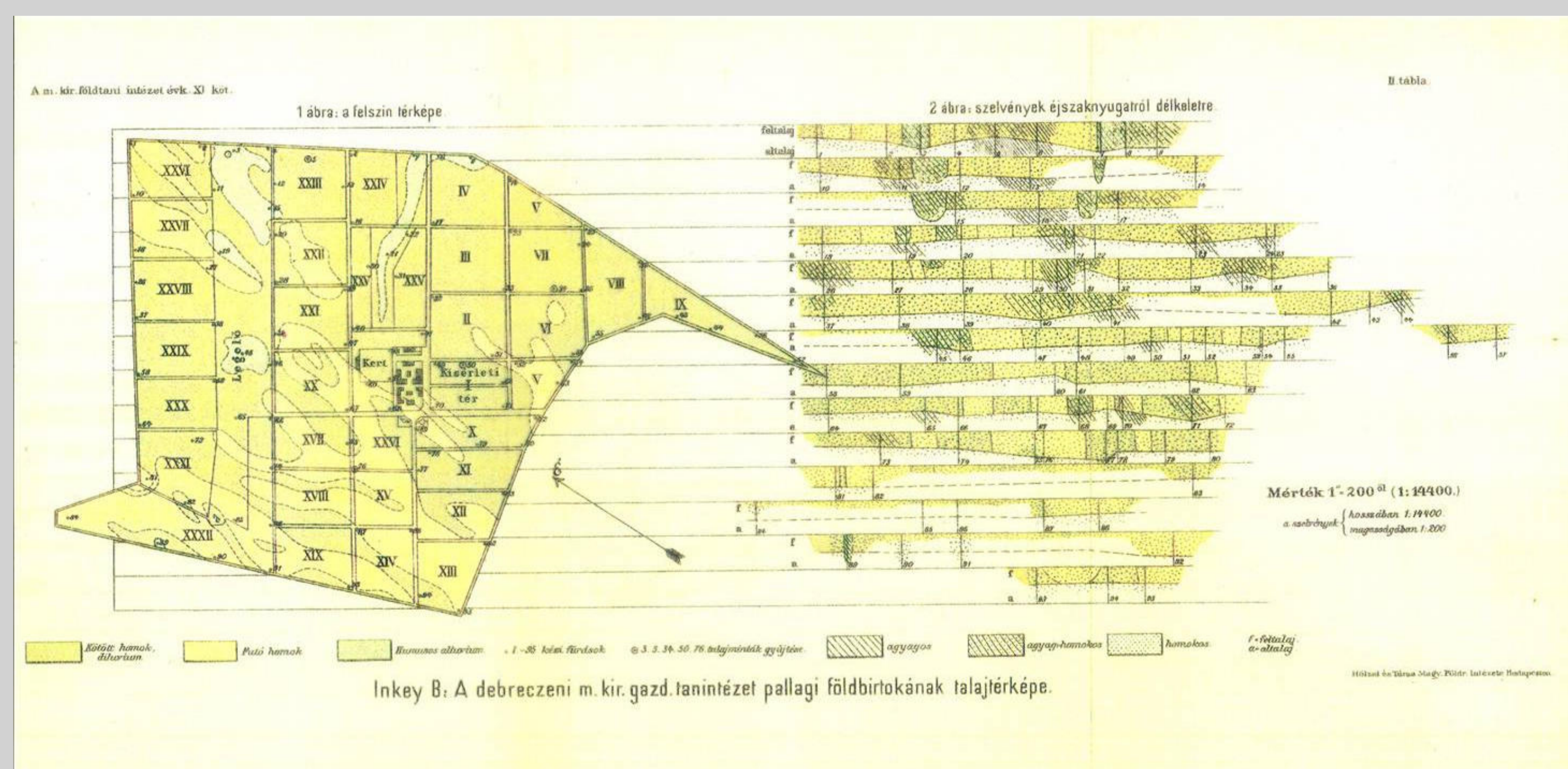


Soil map of Mezőhegyes and its surroundings

Mezőhegyes and its surroundings from "agronom" geological point of view

The first map had been followed by several sheets processed in the Great- and Little Hungarian Plains before in 1895 Inkey recognised that the method they had used was wrong. After five years of work it became evident that the detailed survey of some large estates and the summary of the results are insufficient for completing the agrogeological map of the whole country. He realised that the first priority was the compilation of an overview map featuring all soil types occurring in the country and revealing all problems. Detailed survey can only be launched as soon as this procedure was finished. Summarising his experience he submitted a memorandum to the Minister of Agriculture in which he emphasises the significance of overview maps and asks for permission to change the concept. However his request would not be appreciated and based on the proposal of the Directorate of the Geological Institute the minister rejected it. He insisted on following the original, Prussian concept further on. This decision exasperated Inkey so much that he resigned as head of department and retired to his estate in Vas county.

Soil map of Pallag estate



More than 10 years later came the confirmation of Inkey's views in a conference held in the Geological Institute. It was convened by its new director, Lajos Lóczy Senior. Inkey also attended as advisor and declared the need for compiling a national pedological overview map. The I. International Agrogeological Conference held in 1909 in Budapest in which Inkey was the secretary came to the same conclusion. In this conference the question of mapping scale was brought up and participating experts declared unequivocally: considering the mapping of a country priority must be given to overview map that should be published at small (ca. 1:200.000) scale. It should serve as the basis for following detailed mapping. Recognition of soil zonality and its general acceptance were major factors facilitating the approval of this view.

Bridging the Centuries
1909–2009

Hungary – B u d a p e s t
16–17 September, 2009

